

# FREQUENTLY ASKED QUESTIONS

## WHY PARTICIPATE IN RESEARCH?

When volunteers participate in research, everyone benefits! Through your participation, you bring new hope for patients suffering from different conditions.

Future generations, maybe even your children or grandchildren, may benefit from your choice to further medical research.

## WHY DO YOU NEED MY MEDICAL RECORDS?

We request your medical records to make sure that any procedure completed through one of our studies is safe for you.

This way, we can review your existing conditions and medications, and then suggest the best study.

All your information will be kept confidential and only relevant study staff will have access to it.

## DO I HAVE TO TAKE A MEDICATION AS PART OF PARTICIPATION?

It depends on the type of study. The two most common types are as follows:

**Clinical trial:** type of research in which participants are assigned to one or more groups (which may or may not include an actual intervention or treatment) to evaluate the effects of those interventions on specific medical or behavioral outcomes.

**Observational study:** the investigator simply records observations and analyzes data, without any medical treatments, or changes to the care one receives.



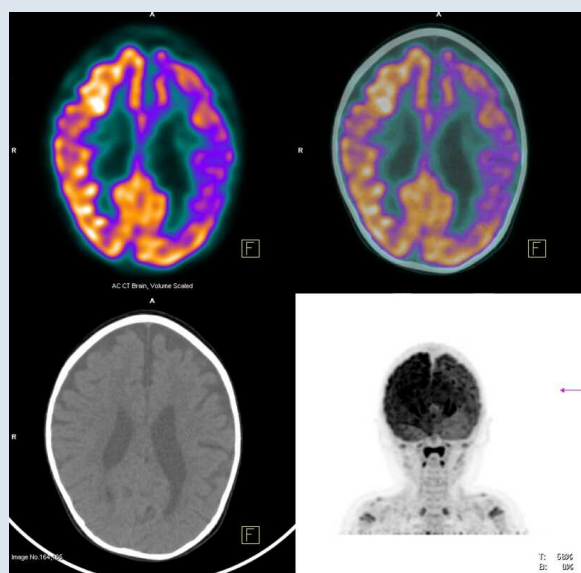
## WHAT IS AN MRI?

We typically use magnetic resonance imaging (MRI) scans for our studies. This enables us to see your brain's structure and function. The image is then used as a "map of your brain" to understand where in the brain different proteins gather the most.

## WHAT IS A PET SCAN?

A Positron Emission Tomography (PET) scan is an imaging test that allows us to look at an individual protein in the body by using a research drug called a "tracer" which works by binding with the protein. Each tracer is administered through an IV placed in the arm.

Our studies use different tracers to look at two specific proteins in the brain that are associated with Alzheimer's disease, but are also present in healthy brains, which is why we hope to learn more! Each tracer contains a very small dosage of radioactive dye, and this dye is what makes the protein "light up" in the image so that we can see where and how much of it there is. The tracers we use in our studies have been tested in thousands of people and are all found to be safe.



## WHO CAN SEE MY RESULTS?

Data gathered from your participation in research is kept within our research group and is only shared with our collaborators.

Medical care and research are different. Many of the procedures completed during a research visit, may not provide useful information to your health care provider. If we find something that is abnormal, we will let you and your doctor know.

## WILL I BE COMPENSATED FOR MY TIME OR DO I HAVE TO PAY FOR ANYTHING?

We believe that your time is valuable, which is why our studies will compensate you for the completion of any study procedures.

You do not have to pay for anything when participating in our studies.

When you schedule your appointment, please ask about transportation reimbursement!

CALL US AT [PHONE NUMBER]