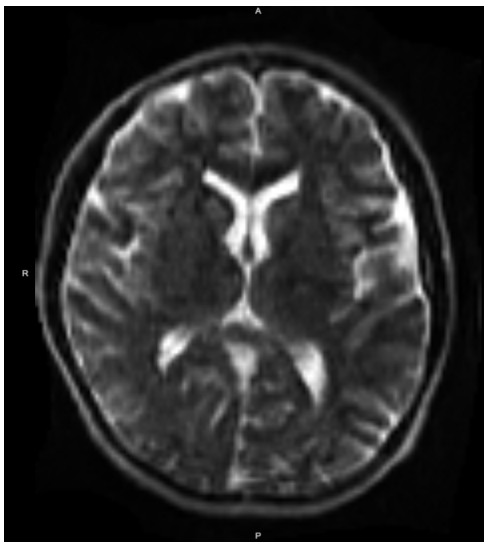


Portable, Low-Field MRI Research Study

We are seeking participants with **memory complaints** and/or **Alzheimer's Disease**



Study Participation involves:

- A low-field MRI imaging session (under 45 minutes) at the MGH outpatient Neurology Clinic.

Parking vouchers will be provided.

If interested, please contact:
Jennifer Guo, Clinical Research Coordinator
Email: jguo22@mgh.harvard.edu
Phone: 617-643-9681

There are no anticipated serious psychological or physical risks to participation. Participation is to help test and improve the performance of a portable, low magnetic field MRI scanner.



MASSACHUSETTS
GENERAL HOSPITAL

Conducted under the direction of:

W. Taylor Kimberly, MD, PhD

Chief, Division of Neurocritical Care, Mass General Hospital

Faculty, Center for Genomic Medicine, Mass General Hospital

Associate Professor of Neurology, Harvard Medical School